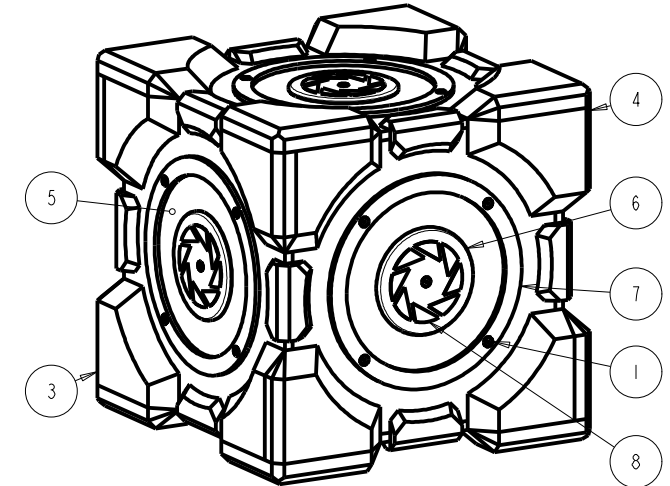
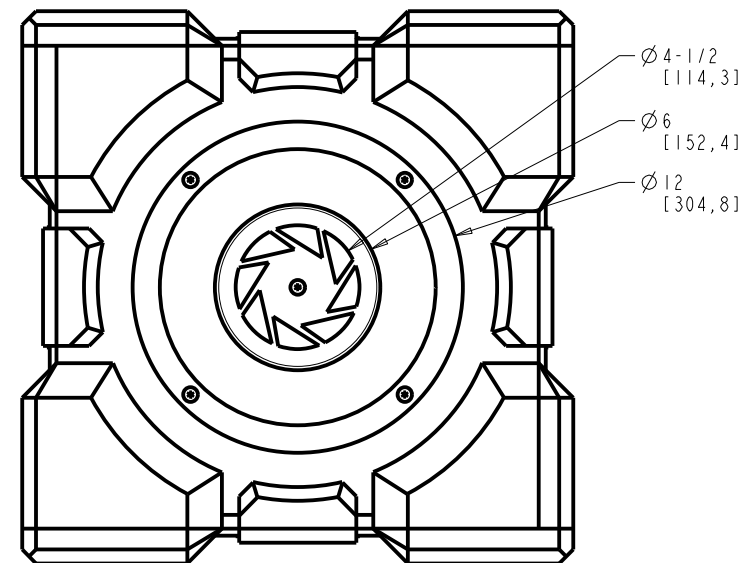
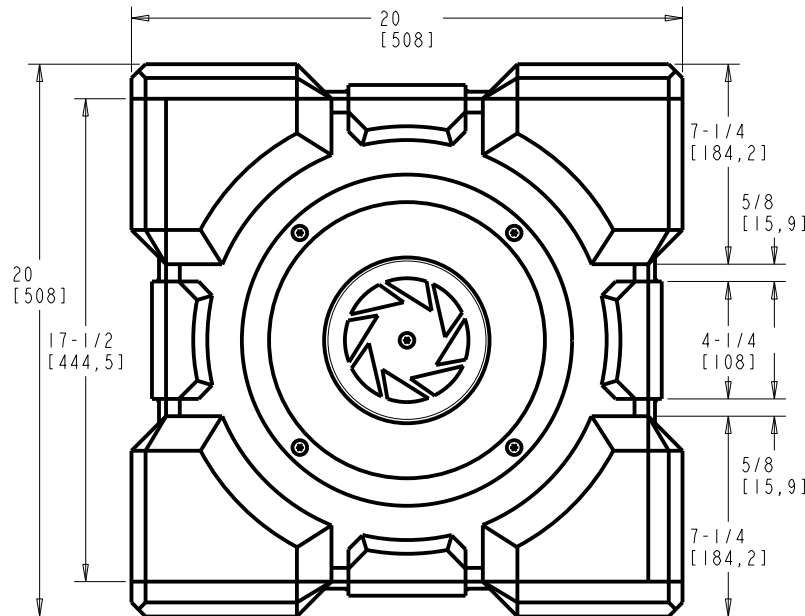
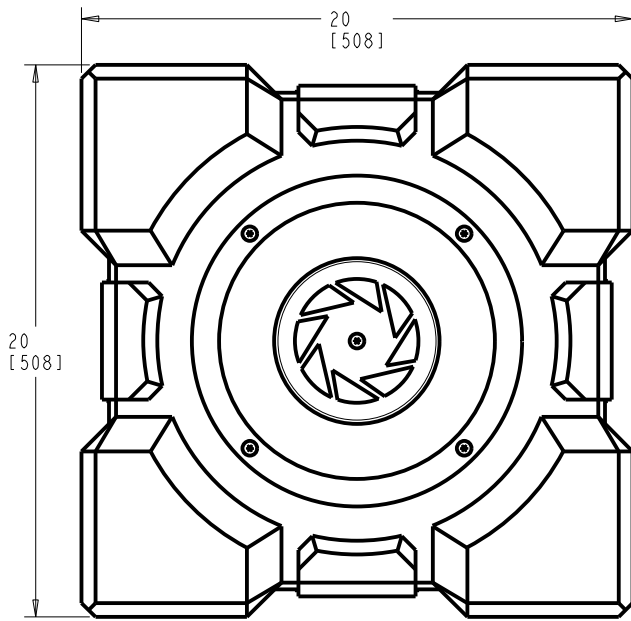


BILL OF MATERIAL					
ITEM	QTY	PART NO.	MATERIAL	DESCRIPTION	
1	30	FHSC025075	18-BSS	FLAT HEAD SOCKET CAP SCREW, 1/4-20 UNC-2A X 3/4 LONG - 70 KPSI MIN TENSILE	
2	1	LSS050	PURCHASE	RGB MULTICOLOR CHANGING SMD5050 LED LIGHT STRIP KIT - 150 LEDES, 16.4 FT ROLL	
3	1	MGB18996-A1	ASSEMBLY	CUBE BODY ASSEMBLY	
4	1	MGB18996-A2	ASSEMBLY	CUBE LID ASSEMBLY	
5	6	MGB18996-P01	FOAMBOARD	CIRCLE, 5/32 X 10-1/2 X 10-1/2, WHITE	
6	6	MGB18996-P02	MDF	CIRCLE, 1/4 X 6 X 6, UNFINISHED - ETSY, WOODCRAFTCUTOUTS	
7	6	MGB18996-P03	MDF	RING, 1/4 X 12 X 12, UNFINISHED - ETSY, WOODCRAFTCUTOUTS	
8	6	MGB18996-P04	VINYL	APERTURE SCIENCE DECAL, 4-1/2 X 4-1/2, BLACK	
9	2	MGB18996-P05	FOAMBOARD	SHEET, 5/32 X 5-5/16 X 16-1/2, WHITE	
10	2	MGB18996-P06	FOAMBOARD	SHEET, 5/32 X 5-5/16 X 16-1/2, WHITE	

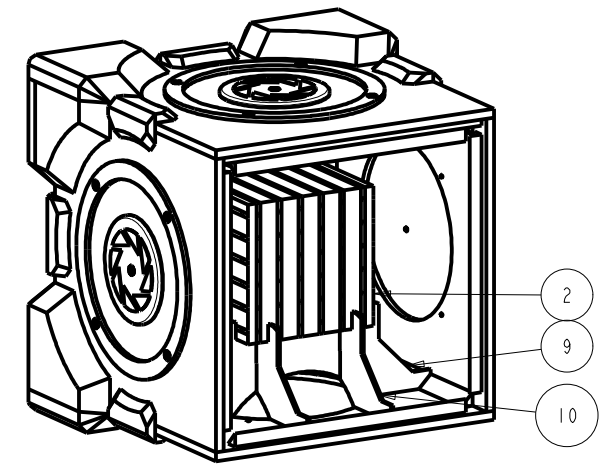
NOTES:

- 1) MATERIALS OF CONSTRUCTION
  - a) BODY AND EDGE ASSEMBLIES - 1/2" MEDIUM DENSITY FIBERBOARD
  - b) CORNERS ASSEMBLIES - 1-1/4" MEDIUM DENSITY FIBERBOARD (LAMINATED)
  - c) DETAIL PARTS - 1/4" MEDIUM DENSITY FIBERBOARD
  - d) LAMP DIFFUSERS - 5/32" FOAMBOARD
- 2) FINISH
  - a) NO PITS CRACKS OR CREVICES
  - b) ALL BURRS AND SHARP EDGES REMOVED
  - c) ALL SURFACES CLEANED AND SANDED SMOOTH BEFORE PAINTING
  - d) PAINT COLORS
    - i) BODY - COOL GRAY 8 U
    - ii) CORNER AND EDGE ASSEMBLIES - COOL GRAY 2 U
    - iii) INTERIOR - WHITE 649 U
- 3) GENERAL
  - a) DOES \*NOT\* STACK
  - b) APPROXIMATE WEIGHT : 39.44 POUNDS
  - c) INTERNAL VOLUME : 4492 CUBIC INCHES
  - d) FOR USE ONLY WITH APPROVED APERTURE SCIENCE PRODUCTS
    - i) VITAL APPARATUS VENT
    - ii) APERTURE SCIENCE HANDHELD PORTAL DEVICE
    - iii) 1500 MEGAWATT APERTURE SCIENCE HEAVY DUTY SUPER-COLLIDING SUPER BUTTON

NOT RECOMENDED FOR USE WITH:  
 APERTURE SCIENCE MATERIAL EMANCIPATION GRILLS  
 -OR-  
 APERTURE SCIENCE EMERGENCY INTELLIGENCE INCINERATORS



SCALE 0.200



SIDE REMOVED TO SHOW INTERIOR  
 SCALE 0.200

No.	Date	Description	By	Chk'd	App'd	Client
A	2014-01-07	REVISED TITLE BLOCK, INCREASED SIZE OF LOGO	GLADOS			
REVISIONS						

REQUIRED TOLERANCES (UNLESS OTHERWISE SPECIFIED)		
DIMENSION NOTES	LINEAR	HOLE DIAMETER
UNITS: INCHES	2.0 ± .020	±.062 <sup>+</sup> .000 <sup>-</sup>
FRACTIONS: 1/16"	2.00 ± .010	.062 <sup>+</sup> -.125 <sup>-</sup>
ANGLES: ± .5°	2.000 ± .005	.125 <sup>+</sup> -.250 <sup>-</sup>
CHAMFERS: EXT-.0625"		1.00 <sup>+</sup> -2.00 <sup>-</sup>
FINISH: 60 Ra		.250 <sup>+</sup> -.500 <sup>-</sup>
RADII: INT-.030		OVER 2.00 <sup>+</sup>

THIS DRAWING AND ALL ASSOCIATED DOCUMENTATION IS THE CONFIDENTIAL PROPERTY OF APERTURE LABORATORIES. DUPLICATION IN PART OR WHOLE WITHOUT THE EXPRESS WRITTEN CONSENT OF APERTURE LABORATORIES IS STRICTLY PROHIBITED.

THIRD ANGLE PROJECTION

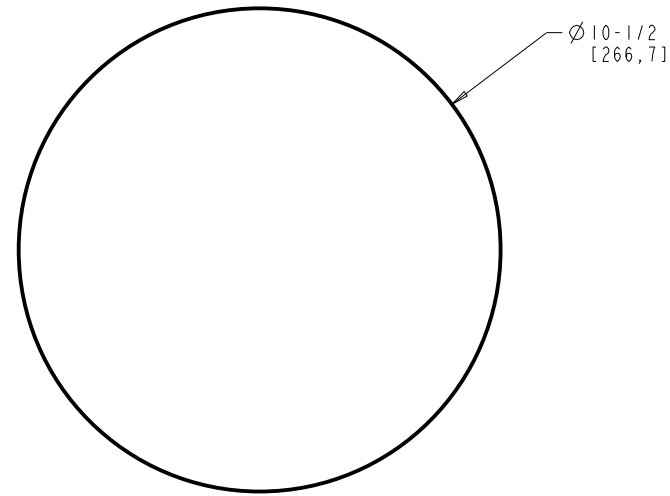


PRODUCTS ARE COVERED UNDER ONE OR MORE OF THE FOLLOWING US PATENTS: 1,402,290; 2,216,873; 8,757,458

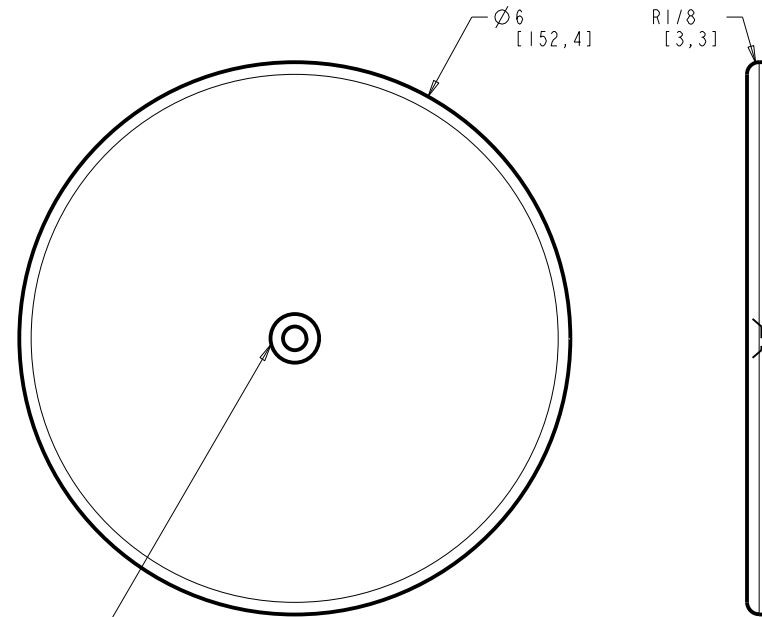
PROJECT NAME: COMPUTER-AIDED ENRICHMENT PROGRAM  
 PROJECT NO: 74549-0064A

APERTURE SCIENCE COMPUTER-AIDED ENRICHMENT CENTER 12841 SANDERS STREET, DETROIT, MICHIGAN 48217			
<b>APERTURE SCIENCE WEIGHTED STORAGE CUBE</b>			
DRAWN BY: GLADOS	Jan-05-15	MGB18996	
CHECKED BY:		Scale: 0.300	SHEET 1
APPROVED BY:		File: MGB18996	OF 10
CLIENT APPR:			Rev A

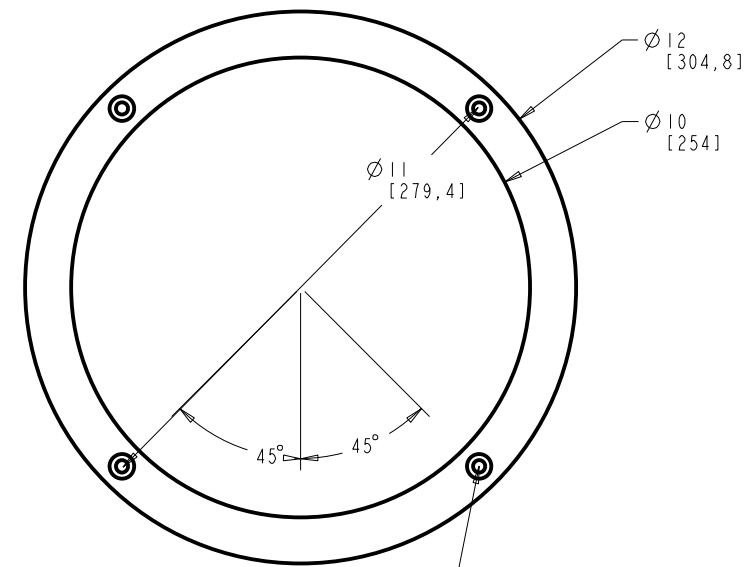
BILL OF MATERIAL				
ITEM	QTY	PART NO.	MATERIAL	DESCRIPTION



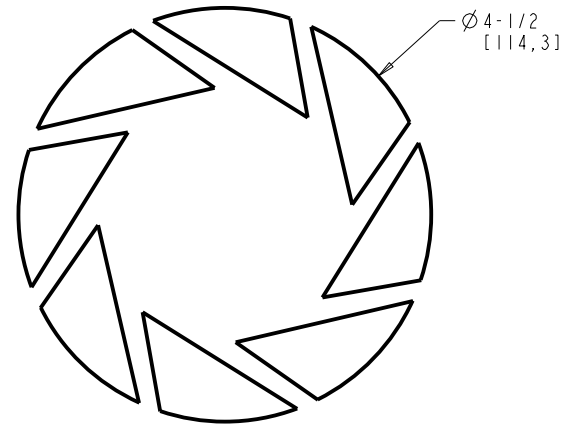
MGB18996-P01  
CIRCLE, 5/32 X 10-1/2 X 10-1/2, WHITE  
FOAMBOARD  
SCALE 0.500



1/4-20 UNC - 2B CLEAR  
F DRILL ( 0.257 ) THRU - ( 1 ) HOLE  
MGB18996-P02  
CIRCLE, 1/4 X 6 X 6, UNFINISHED - ETSY, WOODCRAFTCUTOUTS  
MDF  
SCALE 1.000



1/4-20 UNC - 2B CLEAR  
H DRILL ( 0.266 ) THRU - ( 4 ) HOLE  
MGB18996-P03  
RING, 1/4 X 12 X 12, UNFINISHED - ETSY, WOODCRAFTCUTOUTS  
MDF  
SCALE 0.500



MGB18996-P04  
APERTURE SCIENCE DECAL, 4-1/2 X 4-1/2, BLACK  
VINYL  
SCALE 1.000

No.	Date	Description	By	Chk'd	App'd	Client
REVISIONS						

REQUIRED TOLERANCES (UNLESS OTHERWISE SPECIFIED)		
DIMENSION NOTES	LINEAR	HOLE DIAMETER
UNITS: INCHES	2.0 ± .020	±.062" - .000
FRACTIONS: 1/16"	2.00 ± .010	.062"-.125" ±.001
ANGLES: ± .5°	2.000 ± .005	.125"-.250" ±.002
CHAMFERS: (X1-.0625)"		.250"-.500" ±.003
FINISH: 60 Ra		OVER 2.00" ±.005
RADII: INT-.030		

THIS DRAWING AND ALL ASSOCIATED DOCUMENTATION IS THE CONFIDENTIAL PROPERTY OF APERTURE LABORATORIES. DUPLICATION IN PART OR WHOLE WITHOUT THE EXPRESS WRITTEN CONSENT OF APERTURE LABORATORIES IS STRICTLY PROHIBITED.

THIRD ANGLE PROJECTION

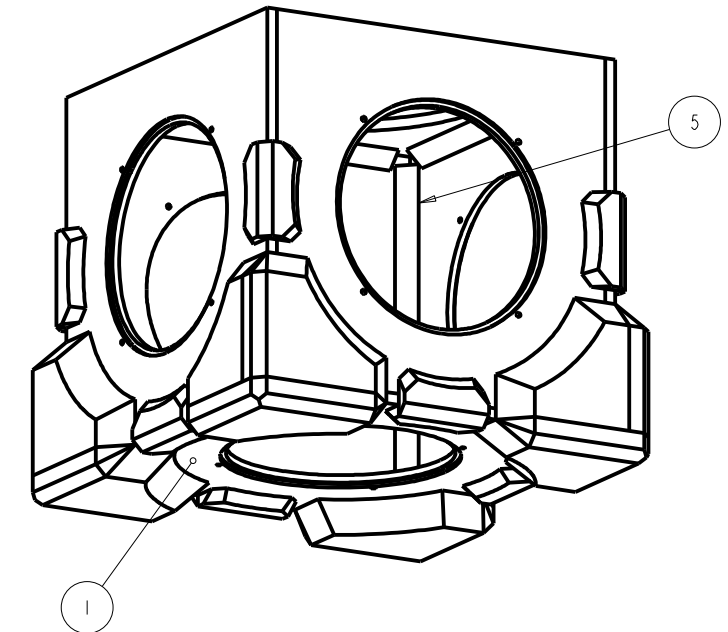
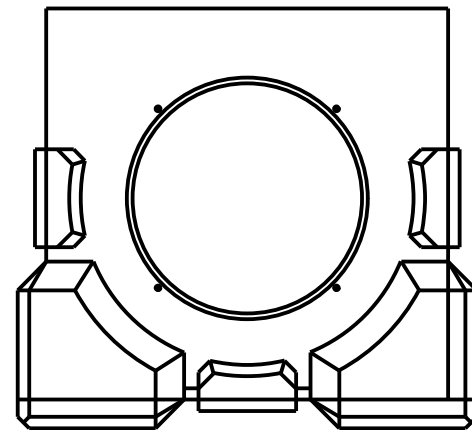
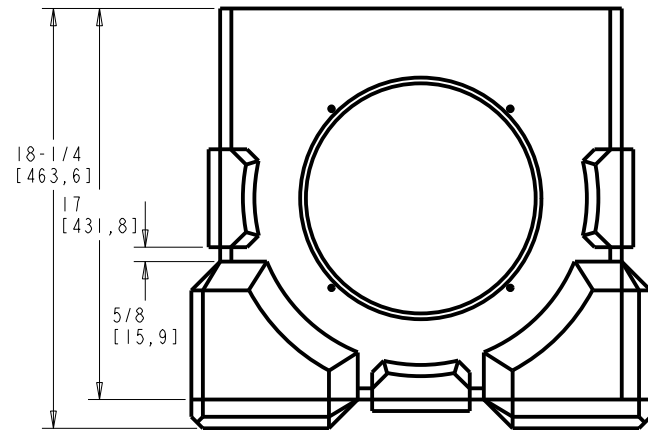
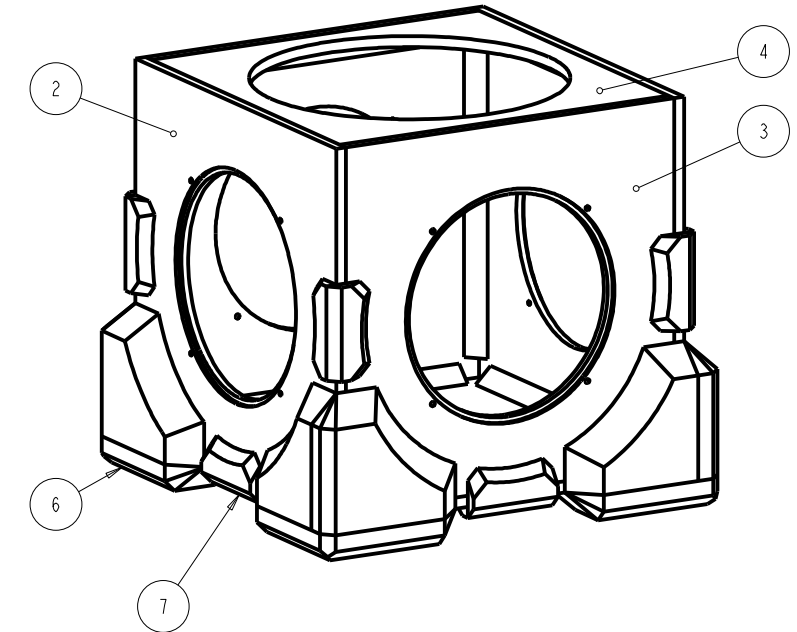
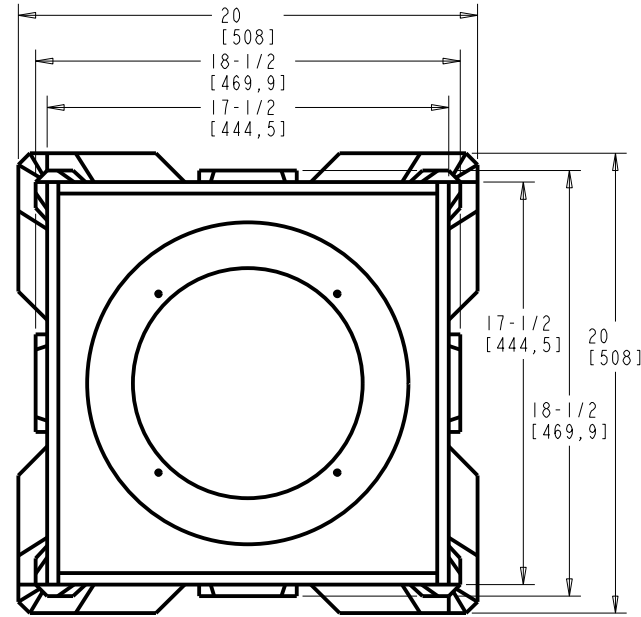
**APERTURE LABORATORIES**

PRODUCTS ARE COVERED UNDER ONE OR MORE OF THE FOLLOWING US PATENTS: 1,402,290; 2,216,873; 8,757,458

PROJECT NAME: COMPUTER-AIDED ENRICHMENT PROGRAM  
PROJECT NO: 74549-0064A

APERTURE SCIENCE COMPUTER-AIDED ENRICHMENT CENTER 12841 SANDERS STREET, DETROIT, MICHIGAN 48217			
<b>APERTURE SCIENCE WEIGHTED STORAGE CUBE DETAIL SHEET</b>			
DRAWN BY: GLADOS	Jan-05-15	MGB18996 D1	
CHECKED BY:		Scale: 1.000	SHEET 2
APPROVED BY:		File: MGB18996	Of 10
CLIENT APPR:			Rev A

BILL OF MATERIAL						
ITEM	QTY	PART NO.	MATERIAL	DESCRIPTION		
1	1	MGB18996-A1P01	MDF	PLATE, 1/2 X 17-1/2 X 17-1/2, UNFINISHED		
2	2	MGB18996-A1P02	MDF	PLATE, 1/2 X 17-1/2 X 16-1/2, UNFINISHED		
3	2	MGB18996-A1P03	MDF	PLATE, 1/2 X 16-1/2 X 16-1/2, UNFINISHED		
4	1	MGB18996-A1P04	MDF	PLATE, 1/2 X 16-1/2 X 16-1/2, UNFINISHED		
5	12	MGB18996-A1P05	PINE	3/4 X 3/4 X 14-1/2, MILL FINISH		
6	4	MGB18996-A3	ASSEMBLY	CORNER ASSEMBLY		
7	8	MGB18996-A4	ASSEMBLY	EDGE ASSEMBLY		



No.	Date	Description	By	Chk'd	App'd	Client
REVISIONS						

REQUIRED TOLERANCES (UNLESS OTHERWISE SPECIFIED)		
DIMENSION NOTES	LINEAR	HOLE DIAMETER
UNITS: INCHES	± .020	± .002
FRACTIONS: 1/16"	± .010	± .001
ANGLES: ± .5°	± .005	± .001
CHAMFERS: (X) .0625"		
FINISH: 60 Ra		
RADII: INT-.030		

THIS DRAWING AND ALL ASSOCIATED DOCUMENTATION IS THE CONFIDENTIAL PROPERTY OF APERTURE LABORATORIES. DUPLICATION IN PART OR WHOLE WITHOUT THE EXPRESS WRITTEN CONSENT OF APERTURE LABORATORIES IS STRICTLY PROHIBITED.

THIRD ANGLE PROJECTION



PRODUCTS ARE COVERED UNDER ONE OR MORE OF THE FOLLOWING US PATENTS: 1,402,290; 2,216,873; 8,757,458

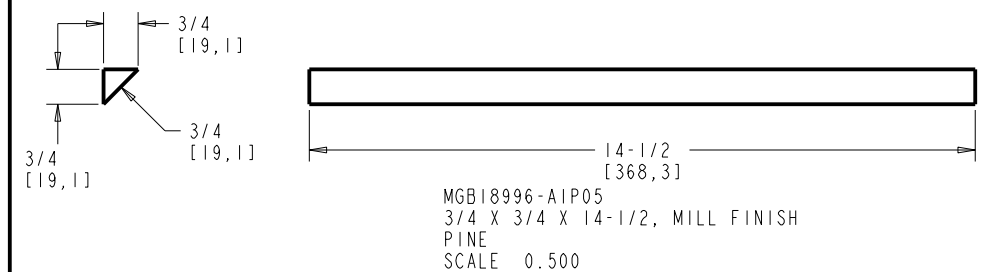
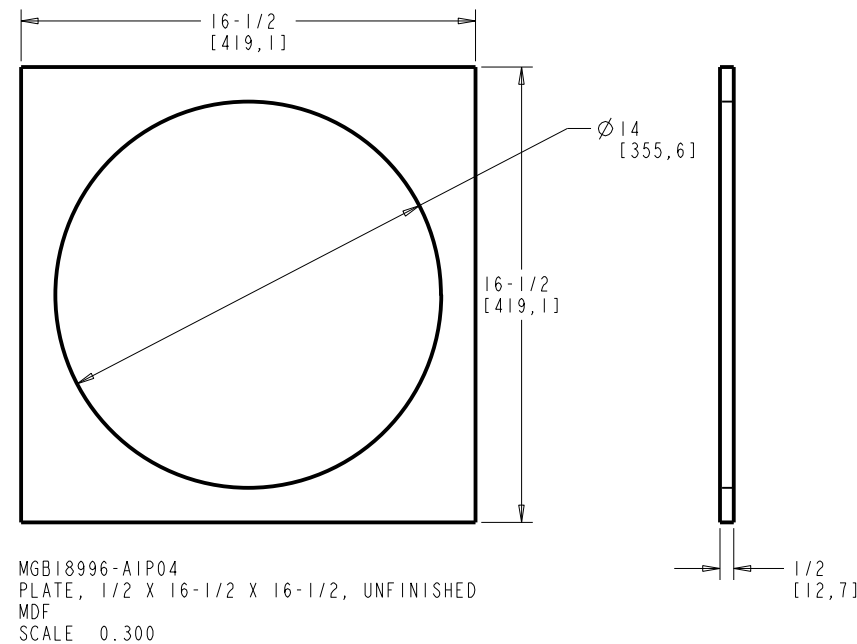
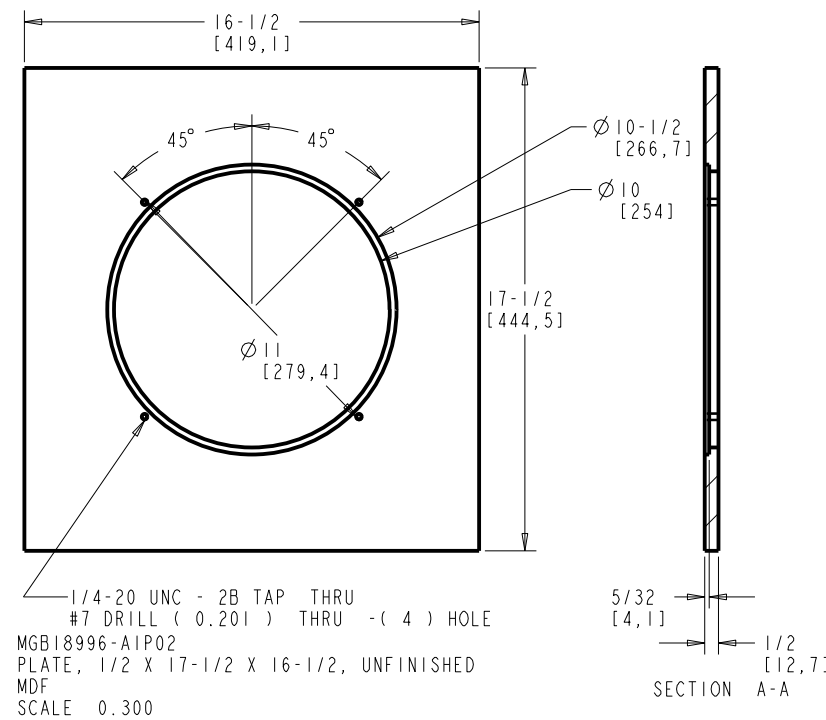
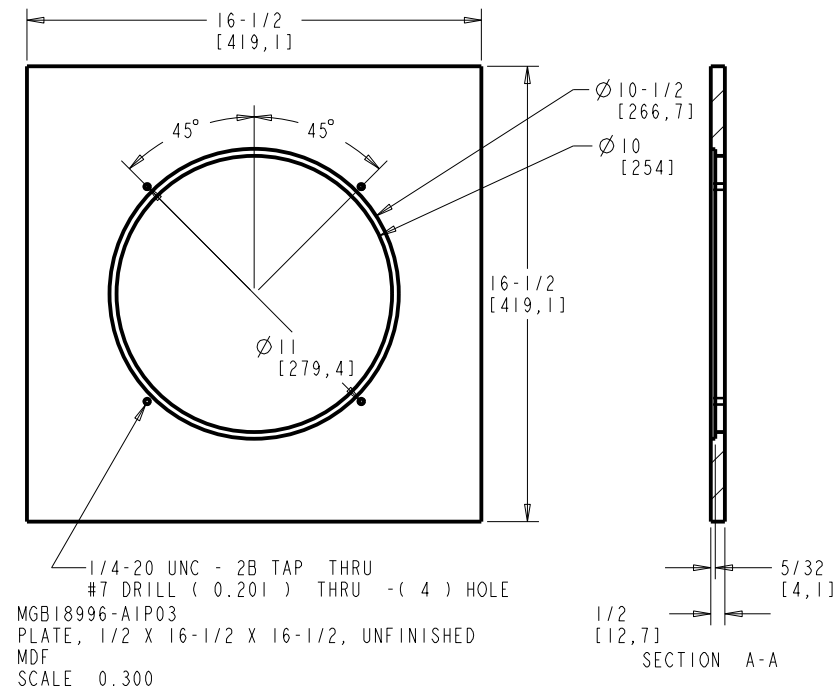
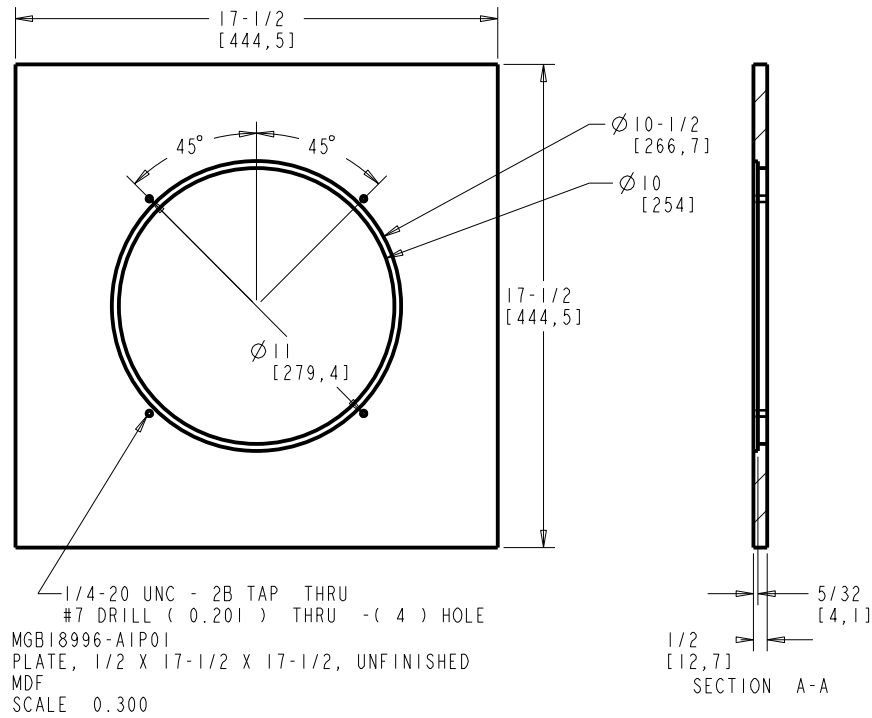
PROJECT NAME: COMPUTER-AIDED ENRICHMENT PROGRAM  
PROJECT NO: 74549-0064A

APERTURE SCIENCE COMPUTER-AIDED ENRICHMENT CENTER  
12841 SANDERS STREET, DETROIT, MICHIGAN 48217

APERTURE SCIENCE  
WEIGHTED STORAGE CUBE  
CUBE BODY ASSEMBLY

DRAWN BY: GLA005	Jan-05-15	MGB18996-A1	
CHECKED BY:		Scale: 0.300	SHEET 3
APPROVED BY:		File: MGB18996	Of 10
CLIENT APPR:			Rev A

BILL OF MATERIAL				
ITEM	QTY	PART NO.	MATERIAL	DESCRIPTION



No.	Date	Description	By	Chk'd	App'd	Client
REVISIONS						

REQUIRED TOLERANCES (UNLESS OTHERWISE SPECIFIED)		
DIMENSION NOTES	LINEAR	HOLE DIAMETER
UNITS: INCHES	± 0.020	± 0.020
FRACTIONS: 1/16"	± 0.010	± 0.010
ANGLES: ± .5°	± 0.005	± 0.005
CHAMFERS: (1:1) .0625"		
FINISH: 60 Ra		
RADII: 1st-.030		

THIS DRAWING AND ALL ASSOCIATED DOCUMENTATION IS THE CONFIDENTIAL PROPERTY OF APERTURE LABORATORIES. DUPLICATION IN PART OR WHOLE WITHOUT THE EXPRESS WRITTEN CONSENT OF APERTURE LABORATORIES IS STRICTLY PROHIBITED.

THIRD ANGLE PROJECTION

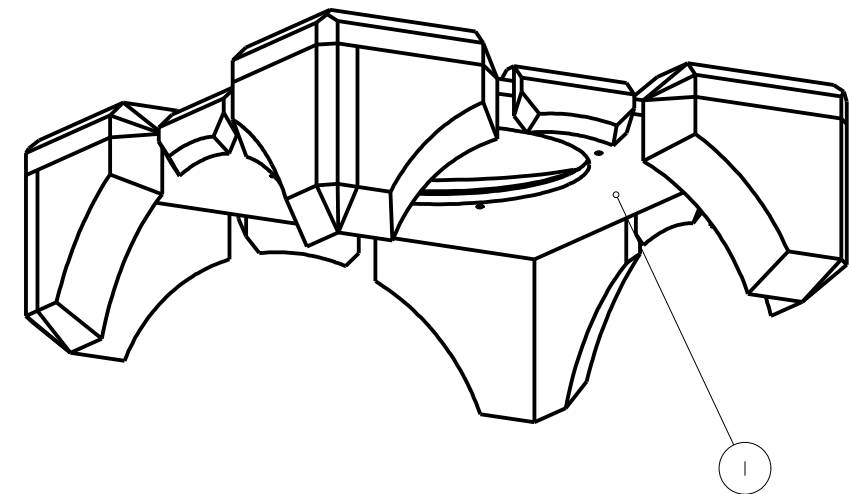
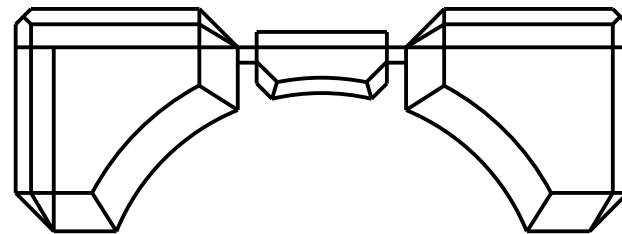
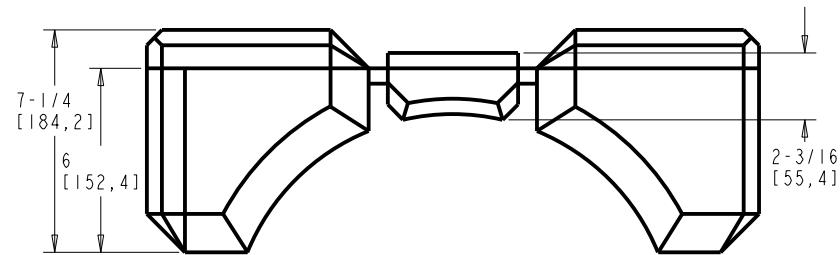
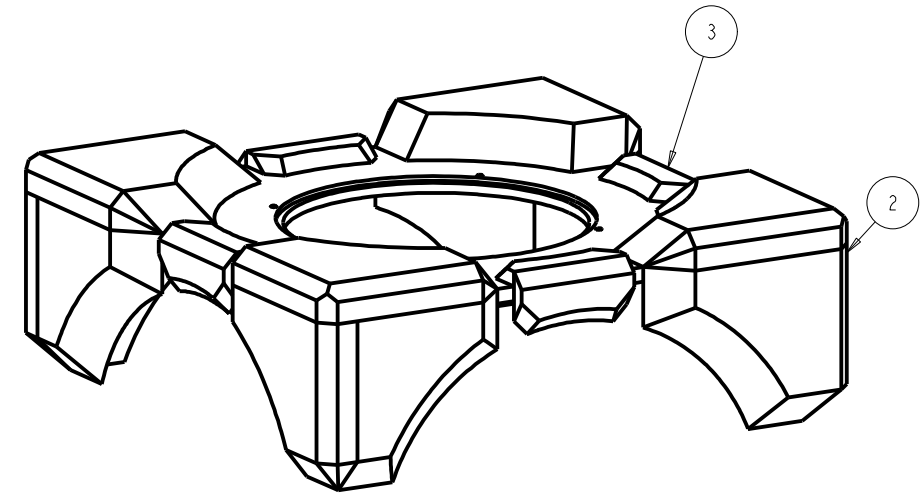
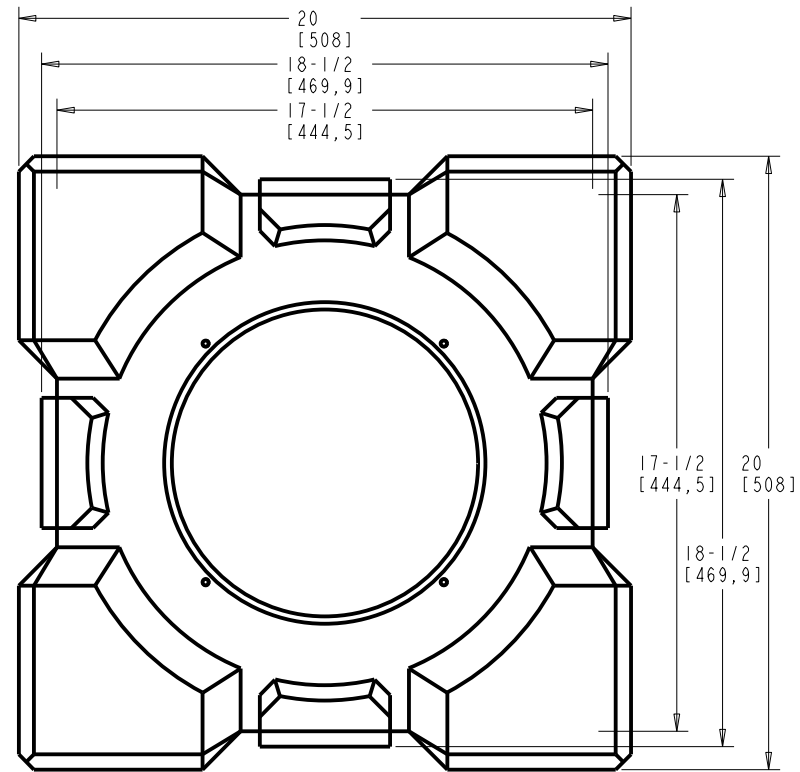


PRODUCTS ARE COVERED UNDER ONE OR MORE OF THE FOLLOWING US PATENTS: 1,402,290; 2,216,873; 8,757,458

PROJECT NAME: COMPUTER-AIDED ENRICHMENT PROGRAM  
 PROJECT NO: 74549-0064A

APERTURE SCIENCE COMPUTER-AIDED ENRICHMENT CENTER 12841 SANDERS STREET, DETROIT, MICHIGAN 48217			
APERTURE SCIENCE WEIGHTED STORAGE CUBE CUBE BODY ASSEMBLY DETAIL SHEET			
DRAWN BY: GLAOS	Jan-05-15	MGB18996-A1 D1	
CHECKED BY:		Scale: 0.300	SHEET 4
APPROVED BY:		File: MGB18996	OF 10
CLIENT APPR:			Rev A

BILL OF MATERIAL					
ITEM	QTY	PART NO.	MATERIAL	DESCRIPTION	
1	1	MGB18996-A1P01	MDF	PLATE, 1/2 X 17-1/2 X 17-1/2, UNFINISHED	
2	4	MGB18996-A3	ASSEMBLY	CORNER ASSEMBLY	
3	4	MGB18996-A4	ASSEMBLY	EDGE ASSEMBLY	



No.	Date	Description	By	Chk'd	App'd	Client
REVISIONS						

REQUIRED TOLERANCES (UNLESS OTHERWISE SPECIFIED)		
DIMENSION NOTES	LINEAR	HOLE DIAMETER
UNITS: INCHES	2.0 ± .020	± .062 <sup>+</sup> .000 <sup>-</sup> .500 <sup>+</sup> .750 <sup>+</sup> .000 <sup>-</sup>
FRACTIONS: 1/16"	2.00 ± .010	.062 <sup>+</sup> .125 <sup>+</sup> .000 <sup>-</sup> .750 <sup>+</sup> 1.00 <sup>+</sup> .000 <sup>-</sup>
ANGLES: 1.5°	2.000 ± .005	.125 <sup>+</sup> .250 <sup>+</sup> .000 <sup>-</sup> 1.00 <sup>+</sup> 2.00 <sup>+</sup> .000 <sup>-</sup>
CHAMFERS: (X) .0625"		.250 <sup>+</sup> .500 <sup>+</sup> .000 <sup>-</sup> OVER 2.00 <sup>+</sup> .000 <sup>-</sup>
FINISH: 60 Ra		
RADII: 1/8" .030		

THIS DRAWING AND ALL ASSOCIATED DOCUMENTATION IS THE CONFIDENTIAL PROPERTY OF APERTURE LABORATORIES. DUPLICATION IN PART OR WHOLE WITHOUT THE EXPRESS WRITTEN CONSENT OF APERTURE LABORATORIES IS STRICTLY PROHIBITED.

THIRD ANGLE PROJECTION

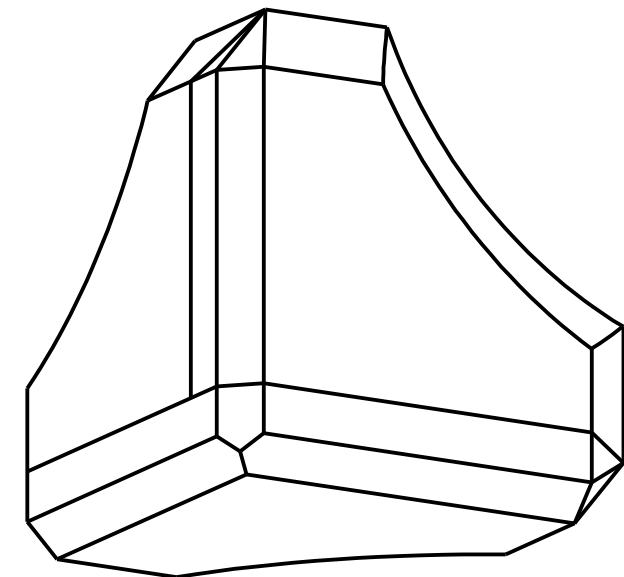
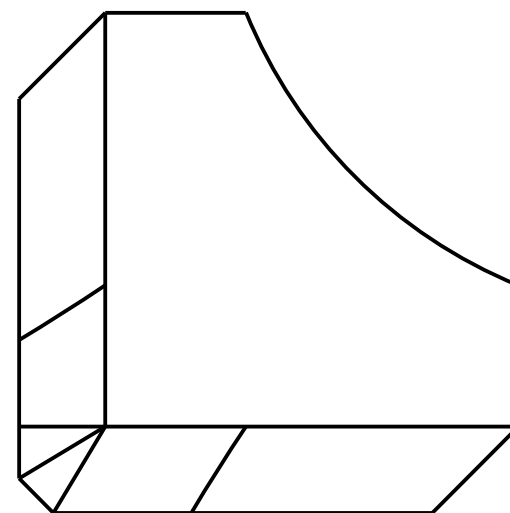
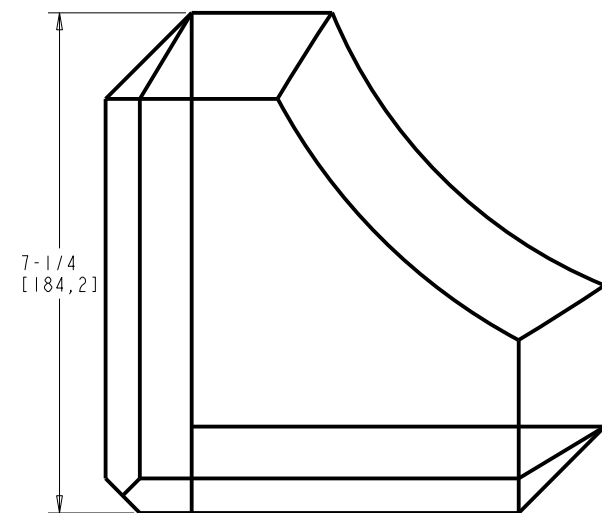
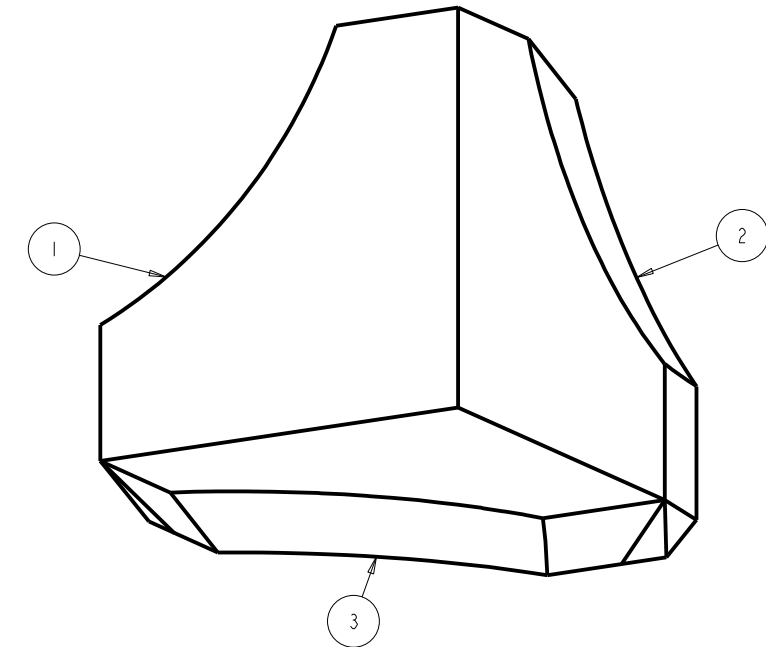
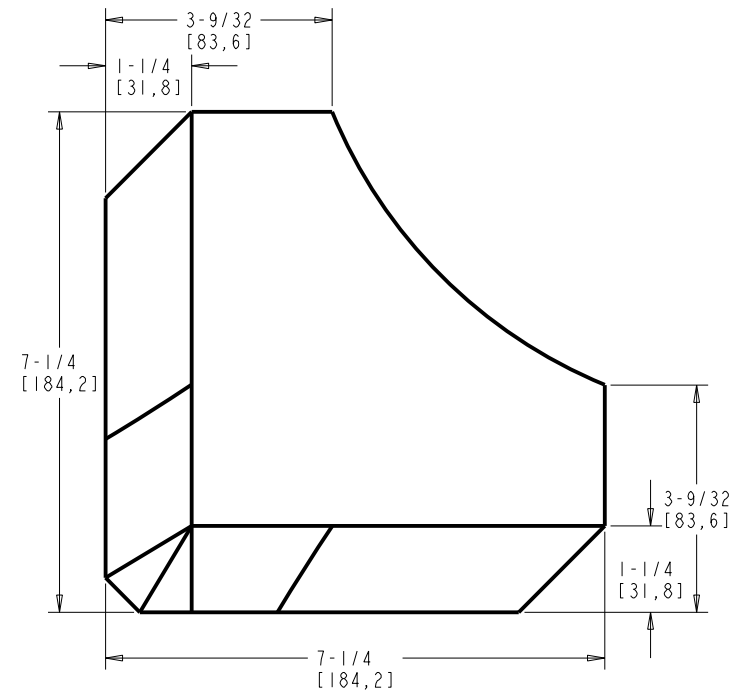
**APERTURE LABORATORIES**

PRODUCTS ARE COVERED UNDER ONE OR MORE OF THE FOLLOWING US PATENTS: 1,402,290; 2,216,873; 8,757,458

PROJECT NAME: COMPUTER-AIDED ENRICHMENT PROGRAM  
PROJECT NO: 74549-0064A

APERTURE SCIENCE COMPUTER-AIDED ENRICHMENT CENTER 12841 SANDERS STREET, DETROIT, MICHIGAN 48217			
<b>APERTURE SCIENCE WEIGHTED STORAGE CUBE CUBE LID ASSEMBLY</b>			
DRAWN BY: GLAOS	Jan-05-15	MGB18996-A2	
CHECKED BY:		Scale: 0.500	SHEET 5
APPROVED BY:		File: MGB18996	Of 10
CLIENT APPR:			Rev A

BILL OF MATERIAL					
ITEM	QTY	PART NO.	MATERIAL	DESCRIPTION	
1	1	MGB18996-A3P01	MDF	PLATE, 1-1/4 X 7-1/4 X 7-1/4, UNFINISHED	
2	1	MGB18996-A3P02	MDF	PLATE, 1-1/4 X 7-1/4 X 6, UNFINISHED	
3	1	MGB18996-A3P03	MDF	PLATE, 1-1/4 X 6 X 6, UNFINISHED	



No.	Date	Description	By	Chk'd	App'd	Client
REVISIONS						

REQUIRED TOLERANCES (UNLESS OTHERWISE SPECIFIED)		
DIMENSION NOTES	LINEAR	HOLE DIAMETER
UNITS: INCHES	± .020	± .002
FRACTIONS: 1/16"	± .010	± .001
ANGLES: ± .5°	± .005	± .001
CHAMFERS: (X) .0625"		
FINISH: 60 Ra		
RADII: INT-.030		

THIS DRAWING AND ALL ASSOCIATED DOCUMENTATION IS THE CONFIDENTIAL PROPERTY OF APERTURE LABORATORIES. DUPLICATION IN PART OR WHOLE WITHOUT THE EXPRESS WRITTEN CONSENT OF APERTURE LABORATORIES IS STRICTLY PROHIBITED.

THIRD ANGLE PROJECTION

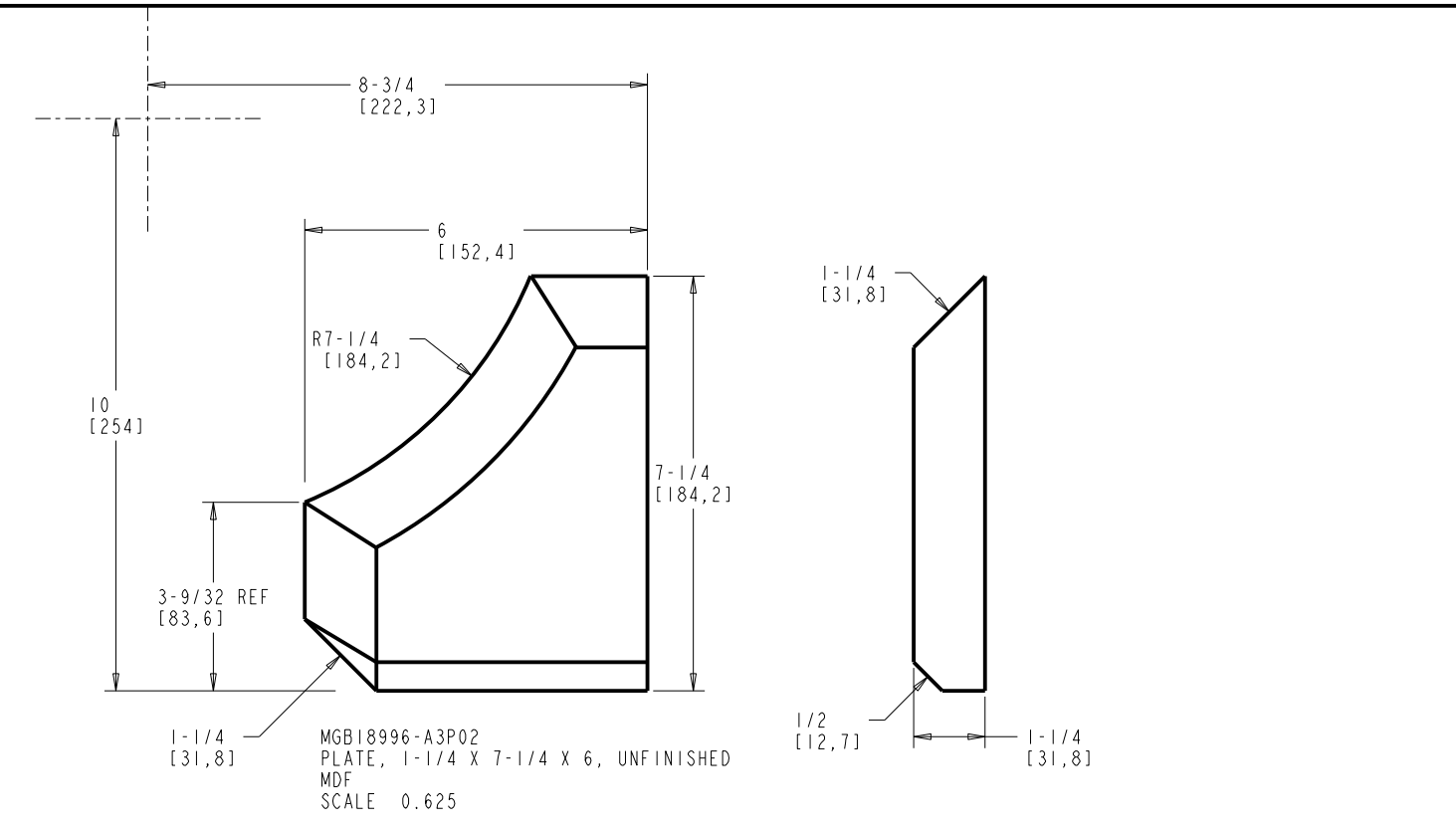
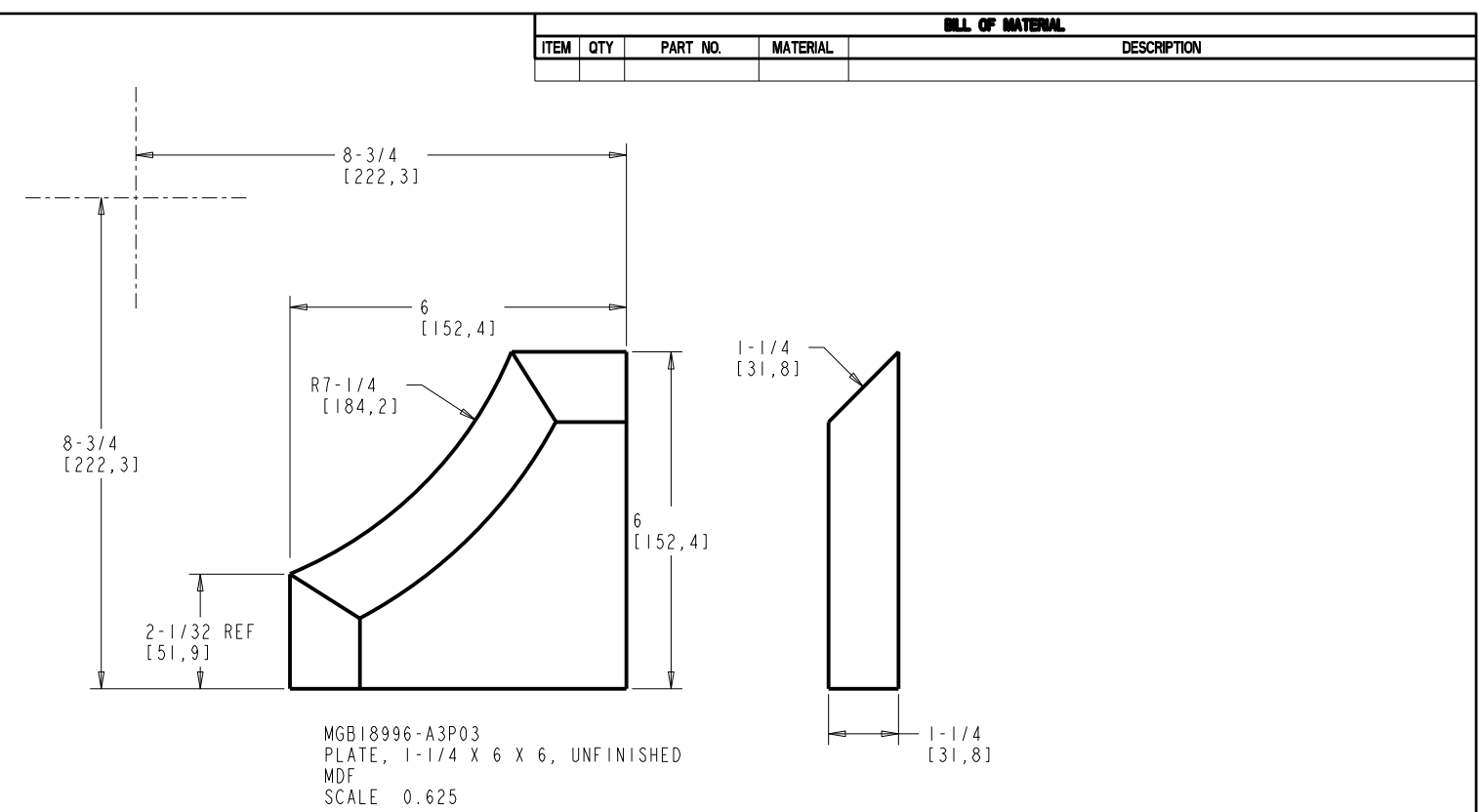
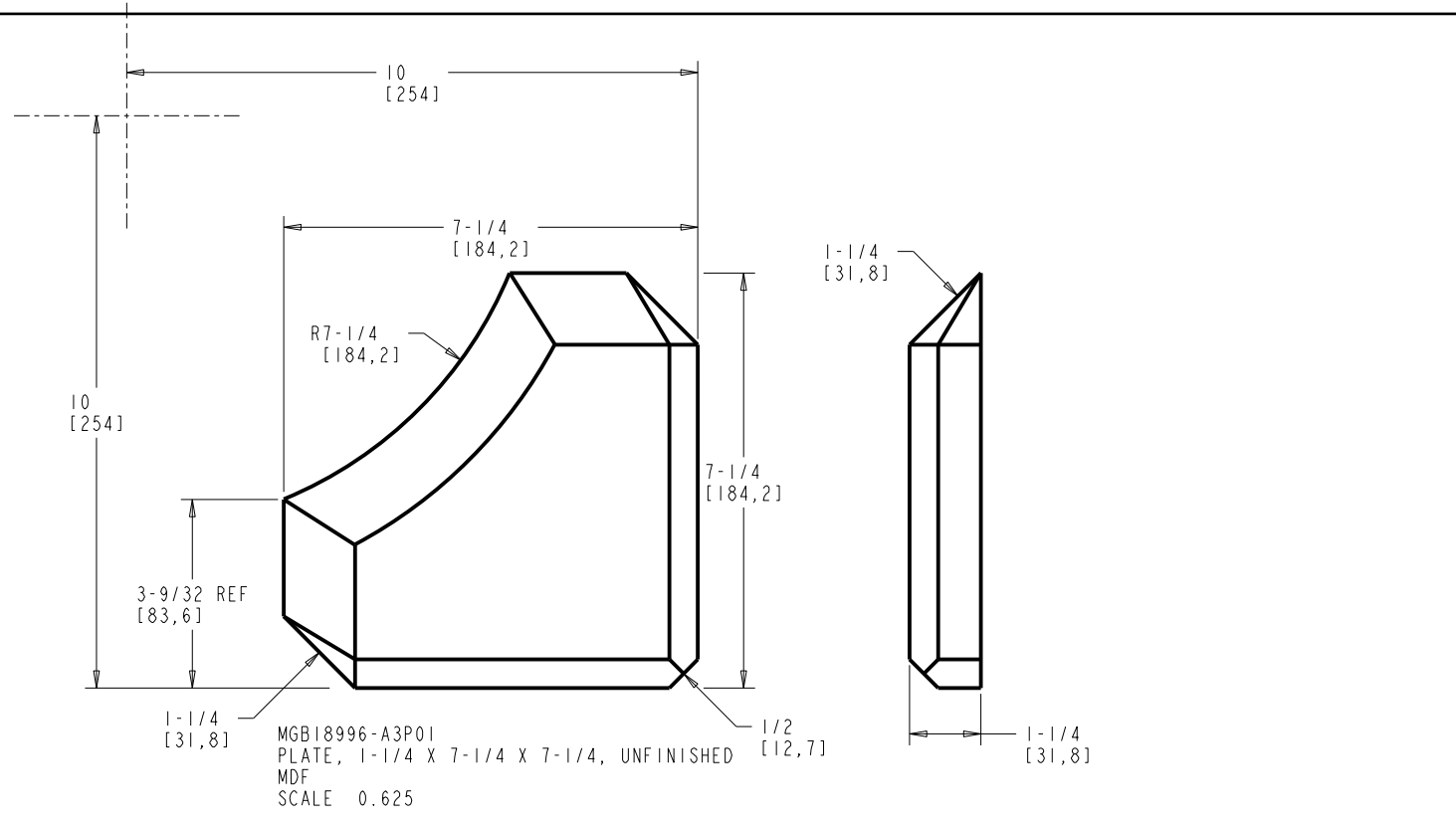
**APERTURE LABORATORIES**

PRODUCTS ARE COVERED UNDER ONE OR MORE OF THE FOLLOWING US PATENTS: 1,402,290; 2,216,873; 8,757,458

PROJECT NAME: COMPUTER-AIDED ENRICHMENT PROGRAM  
PROJECT NO: 74549-0064A

APERTURE SCIENCE COMPUTER-AIDED ENRICHMENT CENTER 12841 SANDERS STREET, DETROIT, MICHIGAN 48217			
<b>APERTURE SCIENCE WEIGHTED STORAGE CUBE CORNER ASSEMBLY</b>			
DRAWN BY: GLA00S	Jan-05-15	MGB18996-A3	
CHECKED BY:		Scale: 0.750	SHEET 6
APPROVED BY:		File: MGB18996	Of 10
CLIENT APPR:			Rev A

BILL OF MATERIAL				
ITEM	QTY	PART NO.	MATERIAL	DESCRIPTION



No.	Date	Description	By	Chk'd	App'd	Client
REVISIONS						

REQUIRED TOLERANCES (UNLESS OTHERWISE SPECIFIED)		
DIMENSION NOTES	LINEAR	HOLE DIAMETER
UNITS: INCHES	2.0 ± .020	± .002
FRACTIONS: 1/16"	2.00 ± .010	± .001
ANGLES: ± .5°	2.000 ± .005	± .001
CHAMFERS: (X)°.0625"		± .001
FINISH: 60 Ra		± .001
RADII: INT-.030		± .001

THIS DRAWING AND ALL ASSOCIATED DOCUMENTATION IS THE CONFIDENTIAL PROPERTY OF APERTURE LABORATORIES. DUPLICATION IN PART OR WHOLE WITHOUT THE EXPRESS WRITTEN CONSENT OF APERTURE LABORATORIES IS STRICTLY PROHIBITED.

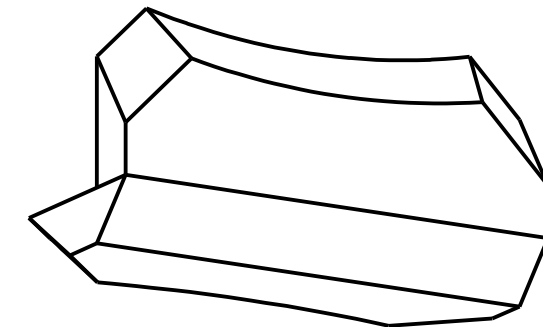
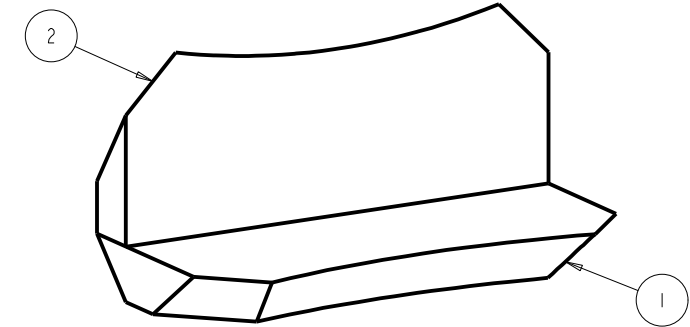
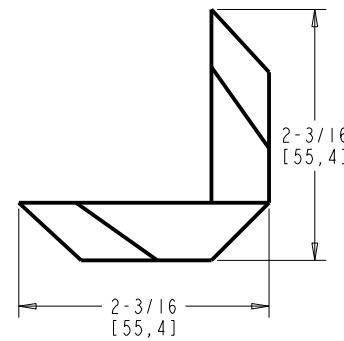
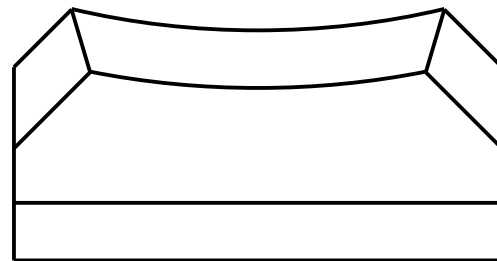
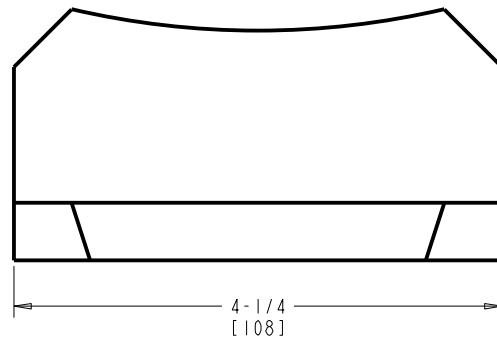
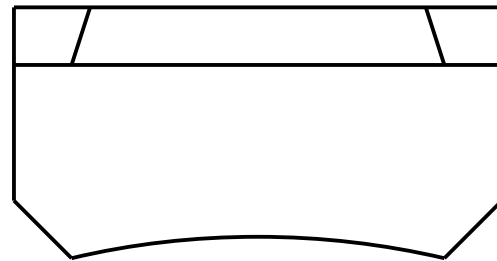
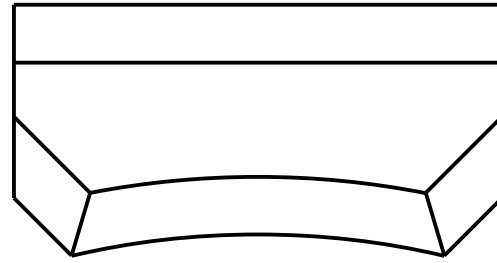
THIRD ANGLE PROJECTION

PRODUCTS ARE COVERED UNDER ONE OR MORE OF THE FOLLOWING US PATENTS: 1,402,290; 2,216,873; 8,757,458

PROJECT NAME: COMPUTER-AIDED ENRICHMENT PROGRAM  
PROJECT NO: 74549-0064A

APERTURE SCIENCE COMPUTER-AIDED ENRICHMENT CENTER 12841 SANDERS STREET, DETROIT, MICHIGAN 48217			
APERTURE SCIENCE WEIGHTED STORAGE CUBE CORNER ASSEMBLY DETAIL SHEET			
DRAWN BY: GLA005	Jan-05-15	MGB18996-A3 D1	
CHECKED BY:		Scale: 0.625	SHEET 7
APPROVED BY:		File: MGB18996	Of 10
CLIENT APPR:			Rev A

BILL OF MATERIAL					
ITEM	QTY	PART NO.	MATERIAL	DESCRIPTION	
1	1	MGB18996-A4P01	MDF	PLATE, 1/2 X 4-1/4 X 2-3/16, UNFINISHED	
2	1	MGB18996-A4P02	MDF	PLATE, 1/2 X 4-1/4 X 1-11/16, UNFINISHED	



No.	Date	Description	By	Chk'd	App'd	Client
REVISIONS						

REQUIRED TOLERANCES (UNLESS OTHERWISE SPECIFIED)		
DIMENSION NOTES	LINEAR	HOLE DIAMETER
UNITS: INCHES	± .020	± .002
FRACTIONS: 1/16"	± .010	± .001
ANGLES: ± .5°	± .005	± .001
CHAMFERS: EXT. .0625"		± .001
FINISH: 60 Ra		± .001
RADII: INT. .030		± .001

THIS DRAWING AND ALL ASSOCIATED DOCUMENTATION IS THE CONFIDENTIAL PROPERTY OF APERTURE LABORATORIES. DUPLICATION IN PART OR WHOLE WITHOUT THE EXPRESS WRITTEN CONSENT OF APERTURE LABORATORIES IS STRICTLY PROHIBITED.

THIRD ANGLE PROJECTION

**APERTURE LABORATORIES**

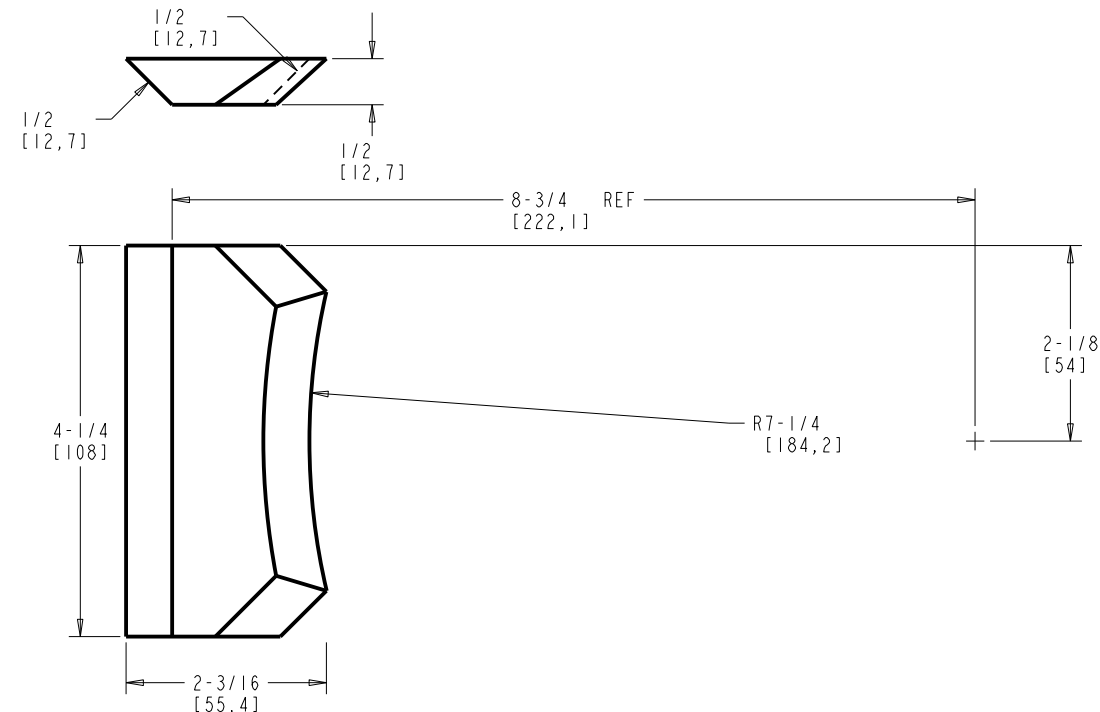
PRODUCTS ARE COVERED UNDER ONE OR MORE OF THE FOLLOWING US PATENTS: 1,402,290; 2,216,873; 8,757,458

PROJECT NAME: COMPUTER-AIDED ENRICHMENT PROGRAM  
PROJECT NO: 74549-0064A

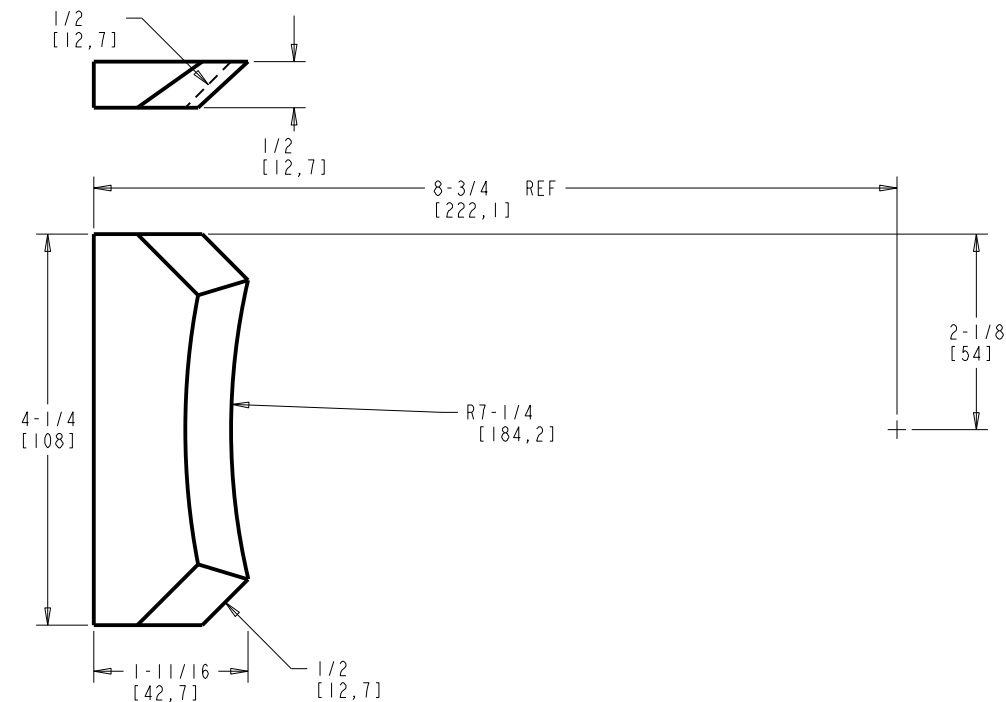
APERTURE SCIENCE COMPUTER-AIDED ENRICHMENT CENTER 12841 SANDERS STREET, DETROIT, MICHIGAN 48217			
<b>APERTURE SCIENCE WEIGHTED STORAGE CUBE EDGE ASSEMBLY</b>			
DRAWN BY: GLA005	Jan-05-15	MGB18996-A4	
CHECKED BY:		Scale: 1.250	SHEET 8
APPROVED BY:		File: MGB18996	Of 10
CLIENT APPR:			Rev A



BILL OF MATERIAL				
ITEM	QTY	PART NO.	MATERIAL	DESCRIPTION



MGB18996-A4P01  
 PLATE, 1/2 X 4-1/4 X 2-3/16, UNFINISHED  
 MDF  
 SCALE 1.000



MGB18996-A4P02  
 PLATE, 1/2 X 4-1/4 X 1-11/16, UNFINISHED  
 MDF  
 SCALE 1.000

No.	Date	Description	By	Chk'd	App'd	Client
REVISIONS						

REQUIRED TOLERANCES (UNLESS OTHERWISE SPECIFIED)		
DIMENSION NOTES	LINEAR	HOLE DIAMETER
UNITS: INCHES	2.0 ± .020	± .062 <sup>+</sup> .000 <sup>-</sup> .500 <sup>+</sup> .750 <sup>+</sup> .000 <sup>-</sup>
FRACTIONS: 1/16"	2.00 ± .010	.062 <sup>+</sup> .125 <sup>+</sup> .000 <sup>-</sup> .750 <sup>+</sup> 1.00 <sup>+</sup> .000 <sup>-</sup>
ANGLES: ± .5°	2.000 ± .005	.125 <sup>+</sup> .250 <sup>+</sup> .000 <sup>-</sup> 1.00 <sup>+</sup> 2.00 <sup>+</sup> .000 <sup>-</sup>
CHAMFERS: (ST-.0625)		.250 <sup>+</sup> .500 <sup>+</sup> .000 <sup>-</sup> OVER 2.00 <sup>+</sup> .000 <sup>-</sup>
FINISH: 60 Ra		
RADII: INT-.030		

THIS DRAWING AND ALL ASSOCIATED DOCUMENTATION IS THE CONFIDENTIAL PROPERTY OF APERTURE LABORATORIES. DUPLICATION IN PART OR WHOLE WITHOUT THE EXPRESS WRITTEN CONSENT OF APERTURE LABORATORIES IS STRICTLY PROHIBITED.

THIRD ANGLE PROJECTION

PRODUCTS ARE COVERED UNDER ONE OR MORE OF THE FOLLOWING US PATENTS: 1,402,290; 2,216,873; 8,757,458

PROJECT NAME: COMPUTER-AIDED ENRICHMENT PROGRAM  
 PROJECT NO: 74549-0064A

APERTURE SCIENCE COMPUTER-AIDED ENRICHMENT CENTER 12841 SANDERS STREET, DETROIT, MICHIGAN 48217			
APERTURE SCIENCE WEIGHTED STORAGE CUBE EDGE ASSEMBLY DETAIL SHEET			
DRAWN BY: GLA005	Jan-05-15	MGB18996-A4 D1	
CHECKED BY:		Scale: 1.000	SHEET 9
APPROVED BY:		File: MGB18996	Of 10
CLIENT APPR:			Rev A



BILL OF MATERIAL				
ITEM	QTY	PART NO.	MATERIAL	DESCRIPTION

No.	Date	Description	By	Chk'd	App'd	Client
REVISIONS						

REQUIRED TOLERANCES (UNLESS OTHERWISE SPECIFIED)		
DIMENSION NOTES	LINEAR	HOLE DIAMETER
UNITS: INCHES	2.0 ± .020	±.062" <sup>+0.00</sup> / <sub>-0.01</sub> .500"-.750" <sup>+0.00</sup> / <sub>-0.01</sub>
FRACTIONS: 1/16"	2.00 ± .010	.062"-.125" <sup>+0.00</sup> / <sub>-0.01</sub> .750"-1.00" <sup>+0.00</sup> / <sub>-0.01</sub>
ANGLES: 1/2°	2.000 ± .005	.125"-.250" <sup>+0.00</sup> / <sub>-0.01</sub> 1.00"-2.00" <sup>+0.00</sup> / <sub>-0.01</sub>
CHAMFERS: EXT-.0625"		.250"-.500" <sup>+0.00</sup> / <sub>-0.01</sub> OVER 2.00" <sup>+0.00</sup> / <sub>-0.01</sub>
FINISH: 60 Ra		
RADII: INT-.030		

THIS DRAWING AND ALL ASSOCIATED DOCUMENTATION IS THE CONFIDENTIAL PROPERTY OF APERTURE LABORATORIES. DUPLICATION IN PART OR WHOLE WITHOUT THE EXPRESS WRITTEN CONSENT OF APERTURE LABORATORIES IS STRICTLY PROHIBITED.

THIRD ANGLE PROJECTION

PRODUCTS ARE COVERED UNDER ONE OR MORE OF THE FOLLOWING US PATENTS: 1,402,290; 2,216,873; 8,757,458

PROJECT NAME: COMPUTER-AIDED ENRICHMENT PROGRAM  
PROJECT NO: 74549-0064A

APERTURE SCIENCE COMPUTER-AIDED ENRICHMENT CENTER 12841 SANDERS STREET, DETROIT, MICHIGAN 48217			
DRAWN BY:	GLAOS	Jan-05-15	
CHECKED BY:			
APPROVED BY:			Scale: 0.500
CLIENT APPR:			File: NGB18996
			SHEET 10 OF 10 Rev A